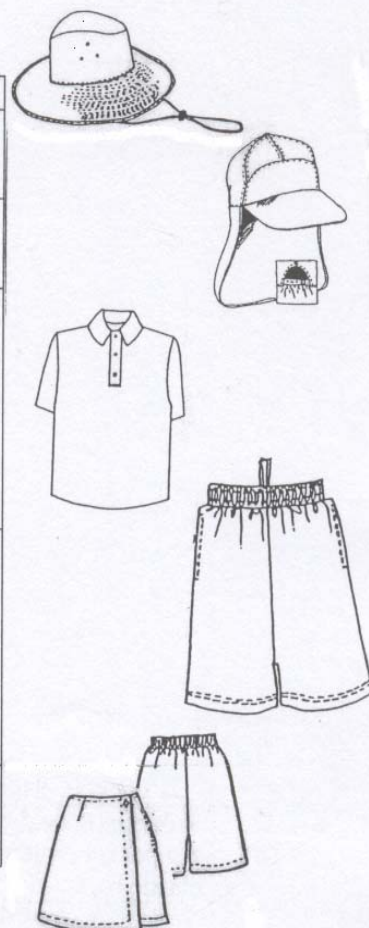




## School Uniform Description

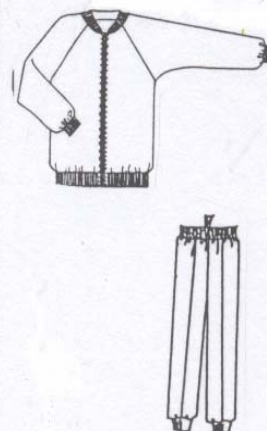
### SUMMER UNIFORM

ITEM	DESCRIPTION	SIZES
HAT.	Wide brimmed slouch hat. (colour – NAVY. With logo)	SML, MED. LGE-XL.
CAP	Peaked cap with back flap. (colour – NAVY. With logo)	SML MED. LGE-XL.
POLO TOP.	Polo shirt, pique knit, 3-button tab front. Reinforced shoulder seam, spare button.  65% Polyester 35% Cotton  (colour – CHERRY. With logo)	4, 6, 8, 10, 12 and 14.
SHORTS. Unisex	Rugby knit shorts, side pockets, corded elastic waist. Child sizes have cord on the inside.  65% Polyester 35% Cotton  (colour – NAVY)	4, 6, 8, 10, 12, and 14
SKORTS. Girls	Skorts in Prestalene with zip pocket on left side and elastic back. (Navy)	4, 6, 8, 10, 12, and 14



### WINTER UNIFORM

ITEM	DESCRIPTION	SIZES
TRACK TOP	Zip jacket, super fleecy, raglan sleeves & rib bands  65% Polyester 35% Cotton  (colour – DARK NAVY. With logo)	4, 6, 8, 10, 12, 14 and 16
TRACK PANTS	Track pants, super fleecy lined. One side pocket, double knee, corded elastic waist, rib cuff.  65% Polyester 35% Cotton  (colour – DARK NAVY)	4, 6, 8, 10, 12, 14 and 16.



Sandals are the preferred footwear in summer. Joggers or black leather lace up shoes may be worn as an alternative. FOOTWEAR IS NOT AVAILABLE FROM THE UNIFORM SHOP.

A white or red skivvy to be worn underneath the tracksuit in winter. These may be purchased from any clothing store.







